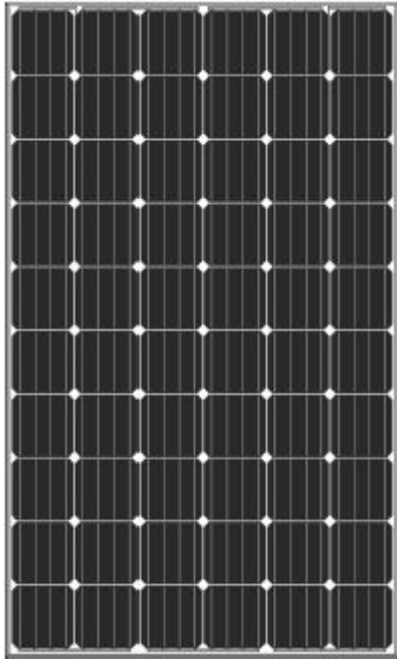


PWSOLAR

250W

MONOCRYSTALLINE MODULE



ADVANCED PERFORMANCE & PROVEN ADVANTAGES

- ◆ High module conversion efficiency up to 20.90% by using innovative Half-cell design and Multi-busbar(MBB) cell technology.
- ◆ Low temperature coefficient and excellent performance under high temperature and low light conditions.
- ◆ Robust aluminum frame ensures the modules to withstand wind loads up to 2400Pa and snow loads up to 5400Pa.
- ◆ High reliability against extreme environmental conditions (passing salt mist, ammonia and hail tests).
- ◆ Potential induced degradation (PID) resistance.
- ◆ Positive power tolerance of 0 ~ +5w.

ELECTRICAL CHARACTERISTICS AT STC

Model	PW250Wp-60M
Maximum Power (P _{max})	250W
Power Tolerance	0 ~ + 5W
Open Circuit Voltage (VOC)	37.90V
Short Circuit Current (ISC)	8.76A
Voltage at Nominal Power (Vmp)	30.80V
Current at Nominal Power (Imp)	8.28A
Size of Module	1640 x 992 x 35mm
Standard Test condition	Irradiance:1000W/M2 Temp: 25°C , & AM :1.5G spectrum
Maximum system voltage	1000VDC
Operating temperature	40°C to +85°C
Module Efficiency	15.67%

ELECTRICAL CHARACTERISTICS AT STC

NOCT	45 +/- 2°C
Voltage temperature coefficient(Voc)	-0.330%/°C
Current temperature coefficient I sc)	+0.058%/°C
Power temperature coefficient(Pmpp)	-0.400%/°C
Minimum power tolerance	+/-10%
NOCT	45 +/- 2°C



Room 101, No. 5 Building, No. 9 Haikou Road, Shinan District, Qingdao, China 266000

0086 532 85872070 0086 155 6392 6558 WhatsApp 0086 138 6421 6496

sales@pwsolarpower.com info@pwsolarpower.com www.pwsolarpower.com

MECHANICAL CHARACTERISTICS

Cell Type	Monocrystalline
Number of cell	60pcs
Size of Module	1640 x 992 x 35mm
Weight	About 18.50kgs
Front Cover	3.2mm tempered glass with AR coating
Frame	Anodized aluminum alloy
Junction Box	IP68, 3 diodes
Cable	4mm ² (0.006inches ²), 900mm (11.81inches)
Connector	MC4 or MC4 compatible

MODULE WARRANTY

25-year limited warranty of 80% power output; 10-year limited warranty of 90% power output; 12-year limited warranty of materials and workmanship.

PACKING

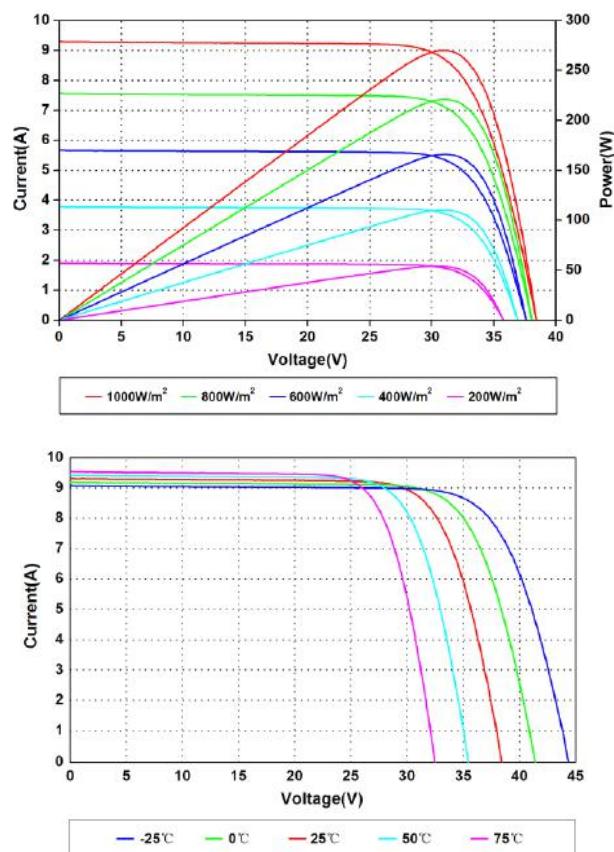
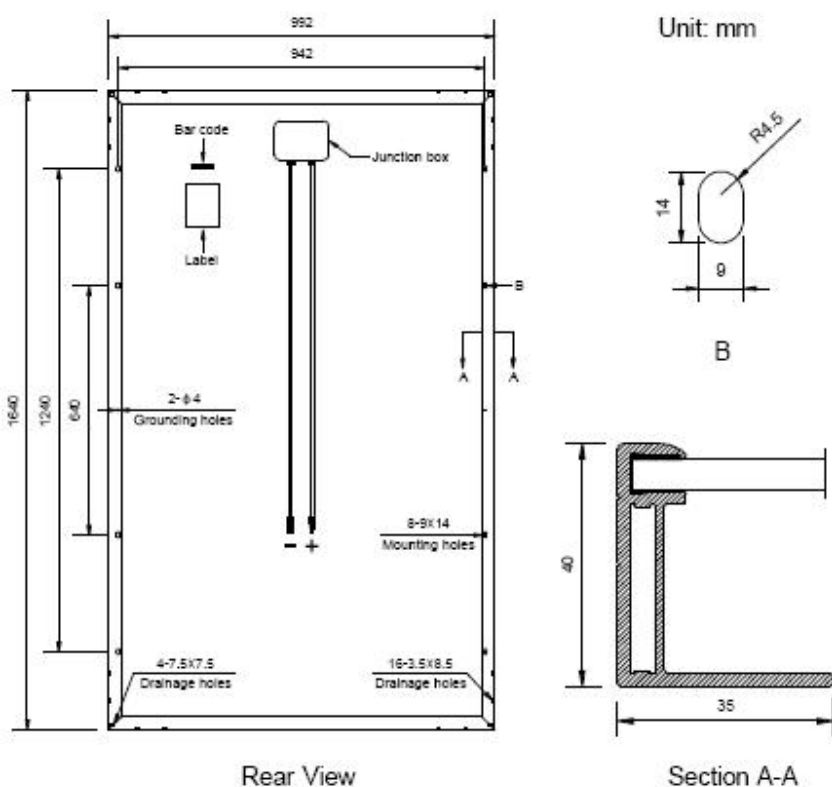
Standard Packing: 31pcs/Pallet

Module Quantity of 20' container: 420pcs

Module Quantity of 40' container: 924pcs

ENGINEERING DRAWING

IV CURVES



Room 101, No. 5 Building, No. 9 Haikou Road, Shinan District, Qingdao, China 266000

0086 532 85872070 0086 155 6392 6558 WhatsApp 0086 138 6421 6496

sales@pwsolarpower.com info@pwsolarpower.com www.pwsolarpower.com

Specifications in this datasheet are subject to change without prior notice