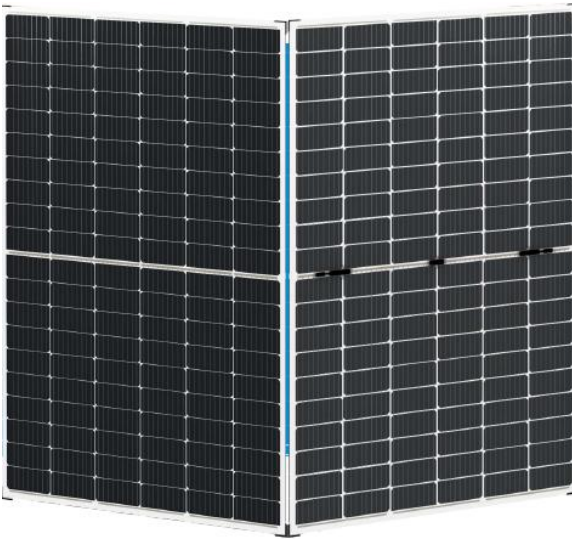


PWSOLAR BIFACIAL

10% 330W Double Glass

BIFACIAL MONOCRYSTALLINE MODULE

ADVANCED PERFORMANCE & PROVEN ADVANTAGES



- ◆ High module conversion efficiency up to 19.40% by using innovative Half-cell design and Multi-busbar(MBB) cell technology.
- ◆ Low temperature coefficient and excellent performance under high temperature and low light conditions.
- ◆ Robust aluminum frame ensures the modules to withstand wind loads up to 2400Pa and snow loads up to 5400Pa.
- ◆ High reliability against extreme environmental conditions (passing salt mist, ammonia and hail tests).
- ◆ Potential induced degradation (PID) resistance.
- ◆ Positive power tolerance of 0 ~ +5w.

ELECTRICAL CHARACTERISTICS AT STC

Model	PWDG330Wp-120M
Maximum Power (P_{max})	330W
Power Tolerance	0 ~ + 5W
Open Circuit Voltage (VOC)	40.93V
Short Circuit Current (ISC)	10.21A
Voltage at Nominal Power (V_{mp})	33.76V
Current at Nominal Power (I_{mp})	9.78A
Size of Module	1698 x 1002 x 6mm
Standard Test condition	Irradiance:1000W/M2 Temp: 25°C , & AM :1.5G spectrum
Maximum system voltage	1000VDC/1500VDC
Operating temperature	- 40°C to +85°C
Module Efficiency	19.40%

ELECTRICAL CHARACTERISTICS AT STC

NOCT	45 +/- 2°C
Voltage temperature coefficient(V_{oc})	-0.330%/°C
Current temperature coefficient (I_{sc})	+0.058%/°C
Power temperature coefficient(P_{mpp})	-0.400%/°C
Minimum power tolerance	+/-10%
NOCT	45 +/- 2°C



Room 101, No. 5 Building, No. 9 Haikou Road, Shinan District, Qingdao, China 266000

0086 532 85872070

0086 155 6392 6558

WhatsApp 0086 138 6421 6496

sales@pwsolarpower.com

info@pwsolarpower.com

www.pwsolarpower.com

MECHANICAL CHARACTERISTICS

Cell Type	Monocrystalline
Number of cell	120pcs (2 x 60)
Size of Module	1698 x 1002 x 6mm
Weight	About 24.00kgs
Front Glass	2.5mm Semi tempered coated glass
Interlayer	EVA/POE/PVB
Back Glass	2.5mm Semi tempered coated glass
Frame	No Frame
Junction Box	IP67, 3 diodes
Cable	4mm ² (0.006inches ²), Portrait : 300mm, Landscape: 1200mm
Connector	MC4 or MC4 compatible
Maximum Load Capacity(Pa)	2400(wind load)/2400(snow load)

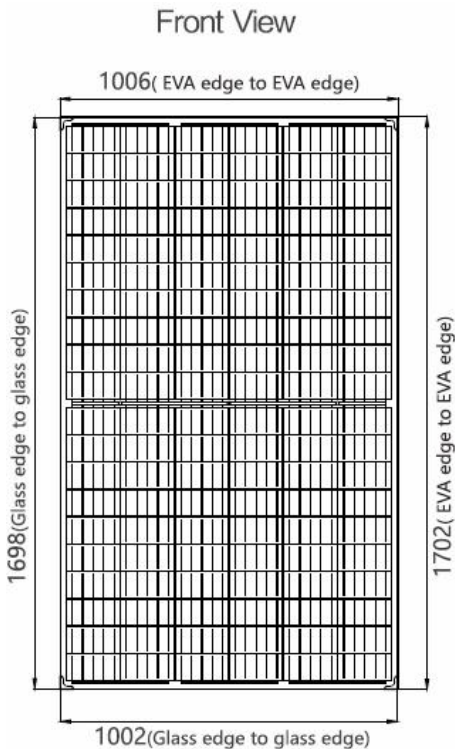
MODULE WARRANTY

12 year limited product; limited linear power warranty: 12 year 91.20% of nominal power output, 30 year 80.60% of nominal power output.
20 years product warranty; 30 years linear power output warranty

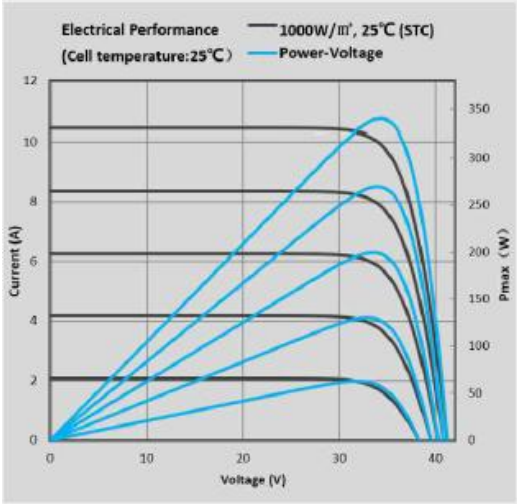
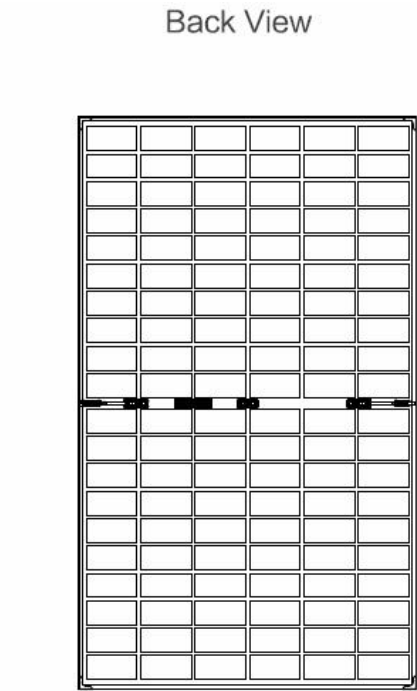
PACKING

Standarding Packing: 38pcs/Pallet Module Quantity of 20' container: 456pcs Module Quantity of 40' container: 988pcs

ENGINEERING DRAWING



IV CURVES



Room 101, No. 5 Building, No. 9 Haikou Road, Shinan District, Qingdao, China 266000

0086 532 85872070 0086 155 6392 6558 WhatsApp 0086 138 6421 6496

sales@pwsolarpower.com info@pwsolarpower.com www.pwsolarpower.com